



GAT MONTHLY MEMBERSHIP PROGRESS REPORT

Results as of: 8/31/2023

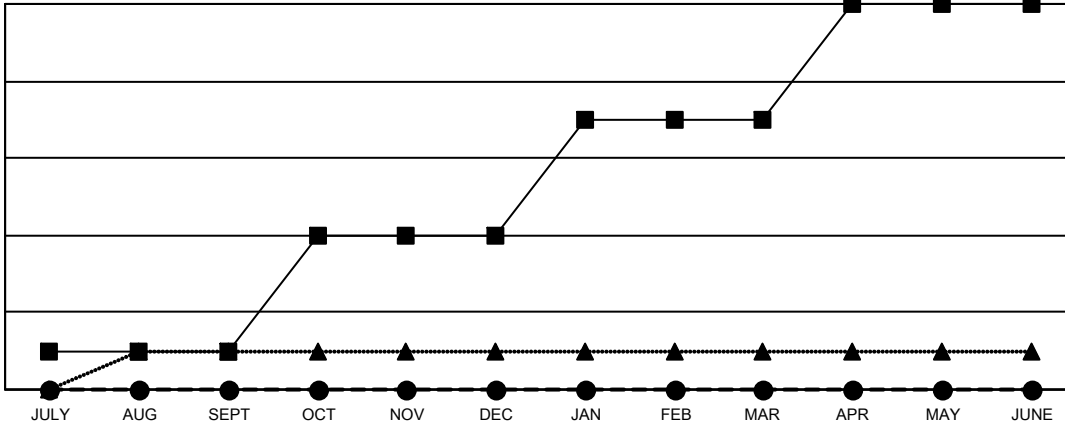
Multiple District 33

LOCATION: MASSACHUSETTS

Clubs			
RESULTS FOR 2023-2024			
QUARTER	NEW CLUB GOAL	NEW CLUBS	DROPPED CLUBS
JULY/AUG/SEPT	1	0	1
OCT/NOV/DEC	3	0	0
JAN/FEB/MAR	3	0	0
APR/MAY/JUNE	3	0	0

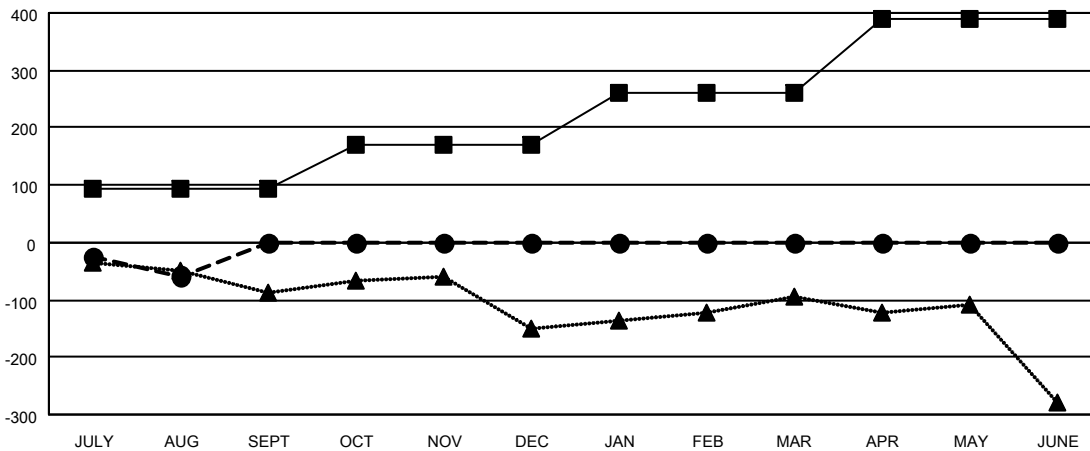
Members			
RESULTS FOR 2023-2024			
QUARTER	MEMBER GROWTH NET GOAL	MEMBER GROWTH ACTUAL	DROPPED MEMBERS ACTUAL (including transfers)
JULY/AUG/SEPT	95	43	94
OCT/NOV/DEC	75	0	0
JAN/FEB/MAR	90	0	0
APR/MAY/JUNE	130	0	0

GOALS AND ACTUAL NEW CLUBS CUMULATIVE



- CURRENT YEAR GOALS FOR NEW CLUBS
- CURRENT YEAR ACTUAL NEW CLUBS
- ▲- LAST YEAR ACTUAL NEW CLUBS

GOALS AND ACTUAL MEMBERS CUMULATIVE



- MEMBER GROWTH NET GOAL
- MEMBER GROWTH ACTUAL
- ▲- LAST YEAR MEMBERSHIP ACTUAL

DROPPED CLUBS: 1	
DROPPED MEMBERS	
DECEASED	23
CLUB CANCELLED	0
OTHER	71
TOTAL	94

23 CLUBS OF 209 ADDED 1 OR MORE NEW MEMBERS

[CLICK HERE FOR CUMULATIVE MEMBERSHIP DATA](#)

GENDER DISTRIBUTION	
MALE	3,760 (61.95%)
FEMALE	2,307 (38.01%)
NON BINARY	0 (0.00%)
PREFER NOT TO ANSWER	2 (0.03%)
TOTAL FAMILY UNIT MEMBERS	974
FAMILY MEMBERS PAYING HALF DUES	495